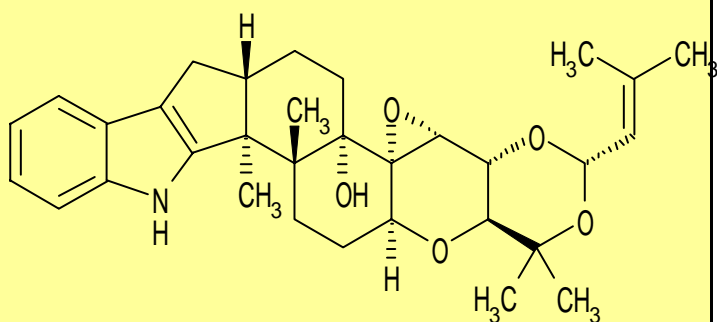


# Terpendole C

Cat.# BLK0990

## Structure



**Origin:** *Albophoma yamanashiensis*.

**CAS Registry Number:** 156967-65-6

**CA Index Name:**

**Appearance:** off white solid

**Molecular Formula/ Weight:**  
C<sub>32</sub>H<sub>41</sub>NO<sub>5</sub>=519.68

**Melting Point:** 114-117

**Purity:** >95.0% by HPLC

**Solubility:** Sol. in 1mg/ml ethanol, methanol, DMSO

## Background Information:

Terpendole C was isolated from *Albophoma yamanashiensis*., and this compound has a indoloditerpene as Paxilline. It showed tremorgenic activity, and ACAT inhibitory activity.

## Handling and Storage:

Store at -20 .

## References:

1. J Antibiot (Tokyo) 1995 Mar;48(3):C-1.
2. J Agric Food Chem. 1999 Mar;47(3):1092-7.

*Manufactured with Cortesy strain from The Kitasato Institute.*